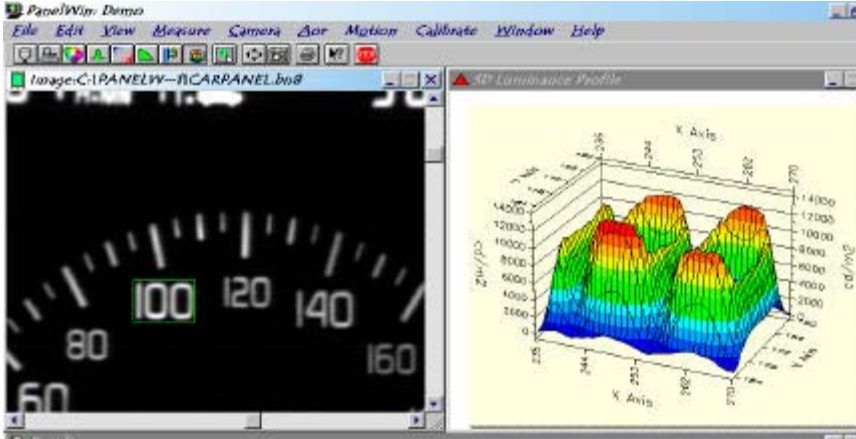


# PHOTO RESEARCH®

## PanelWin Software



**PanelWin screen showing 3D Luminance Profile of Area of Regard defined by the green square surrounding the "100" in the digital image at the left of the screen.**

PanelWin software is the latest in the family of Windows based PR-900 Video Photometer control software.

PanelWin has been specifically designed measure and analyze panels in systems such as military and commercial ground vehicles (cars, trucks et al) and military, commercial and private aircraft.

Speed up measurements by using the advantages of a two dimensional detector system like the PR-900 and PR-920, then using PanelWin software to analyze the result.

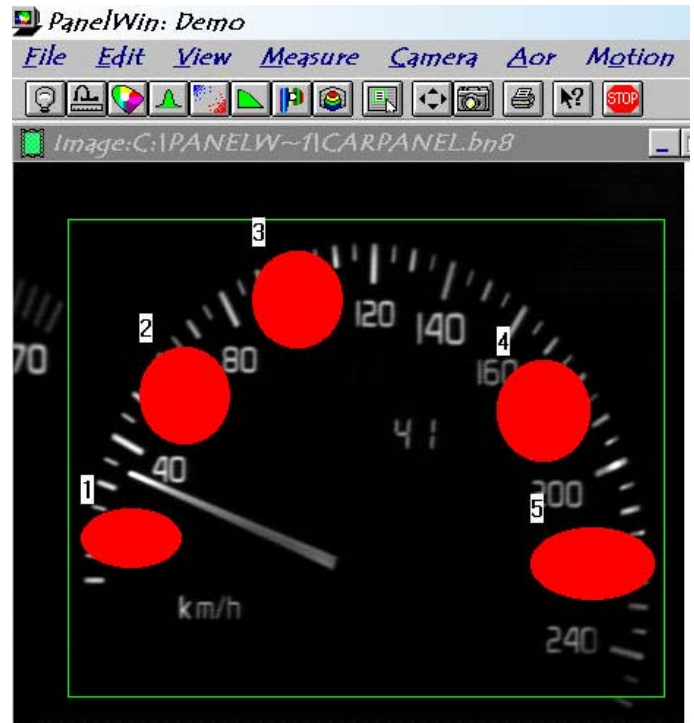
With this powerful combination, what might have taken hours using traditional single measurement techniques, can now be done in minutes.

Automate your measurement sequences by using the built in Macro functions. It's as easy as enabling the Macro record feature, performing the desired measurements and calculations, then stopping the Macro recorder. Your steps are automatically converted into PanelWin macro code.

Calibrate your PR-900 or PR-920 with PanelWin insuring continuous accuracy and reducing down time (requires calibration standards - not included).

PanelWin software can be added to your existing PR-900 or PR-920 software suite (e.g. VideoWin) to extend the capabilities of your system.

Contact us for further details.



**Up to 100 user selectable spots within an Area of Regard can be analyzed simultaneously for luminance, contrast or color .**



9731 Topanga Canyon Place Chatsworth, CA 91311-4125  
PH: (818) 341-5151 • FAX: (818) 341-7070  
www.photoresearch.com  
sales@photoresearch.com

Copyright © 2000 PHOTO RESEARCH, Inc.